

# Connecting to MajorAir – Windows XP SP2+

2009 - 2010 | Millsaps College | Information Technology Services

Revised 8-8-09

For Millsaps Faculty, Staff, and Students

## Areas with Wireless Access

As the campus wide wireless plan nears completion areas will continuously be added to the list of active Hotspots. At this point connection to the wireless network is available in all academic, residential and instructional areas. The wireless network can also be reached in athletic facilities, the Millsaps Bowl, and the Plaza, which is located adjacent to the Student Center and the HAC. For the most up to date availability list, visit <http://www.millsaps.edu/wireless>.

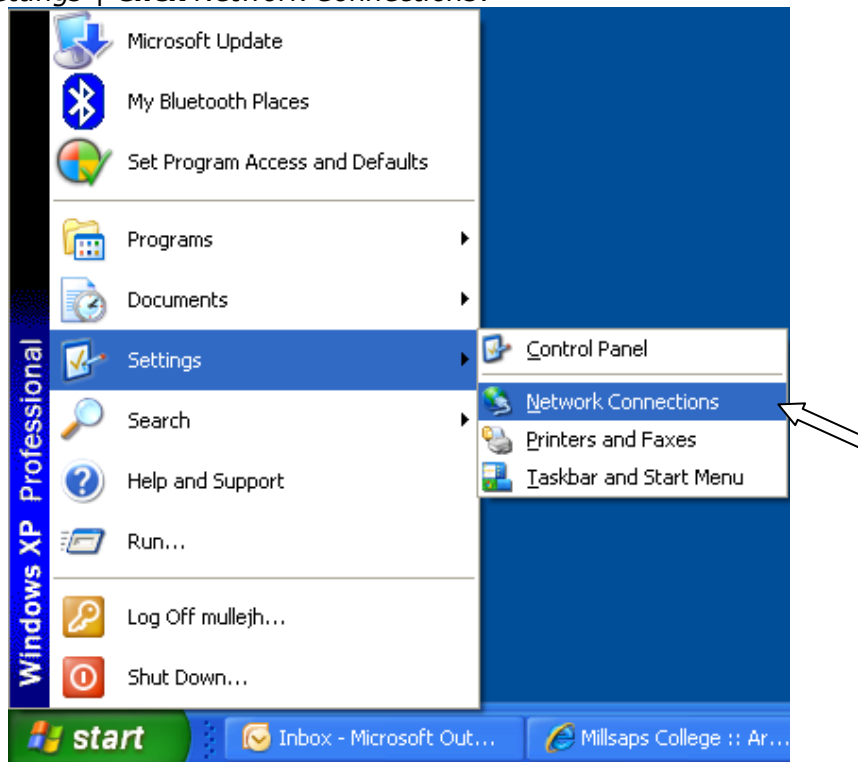
## Requirements for Access:

You must have a computer equipped with an 802.11b/g-compatible wireless card. The supported encryption type is available only with Microsoft Windows XP with Service Pack 2+ installed.

The first two steps may be done anywhere. The last step must be completed while in a wireless enabled area.

## Step 1 – Enabling your Wireless card

Turn on your computer and make sure that the wireless card is activated. To do this **Select Start | Select Settings | Click Network Connections**.



In Network Connections, **Right-click** your *wireless card* | **Click Enable**.

## Step 2 – Setting up your connection to MajorAir

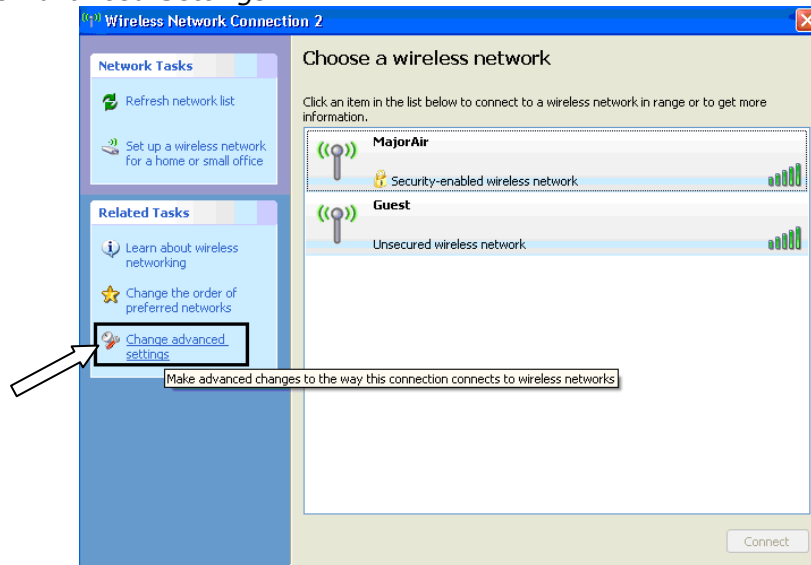
Notice the Wireless Connection icon in the bottom-right of the screen.



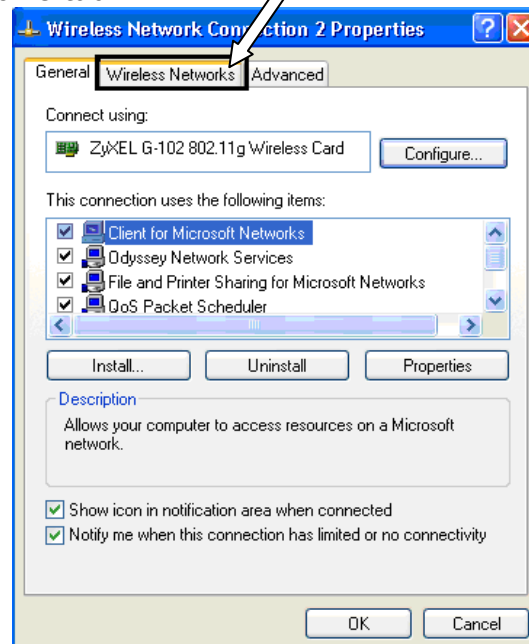
**Right-click** the *Wireless Connection* icon | **Click** *View Available Wireless Networks*.



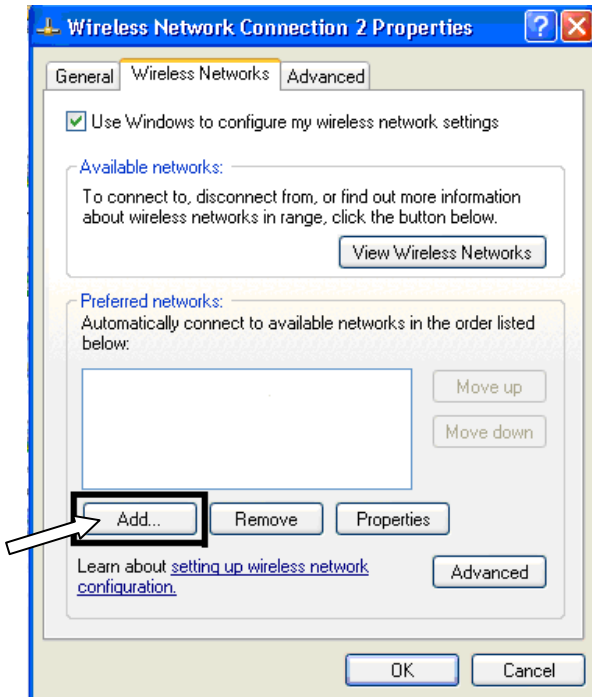
**Click** *Change Advanced Settings*.



**Select** the *Wireless Networks* tab.

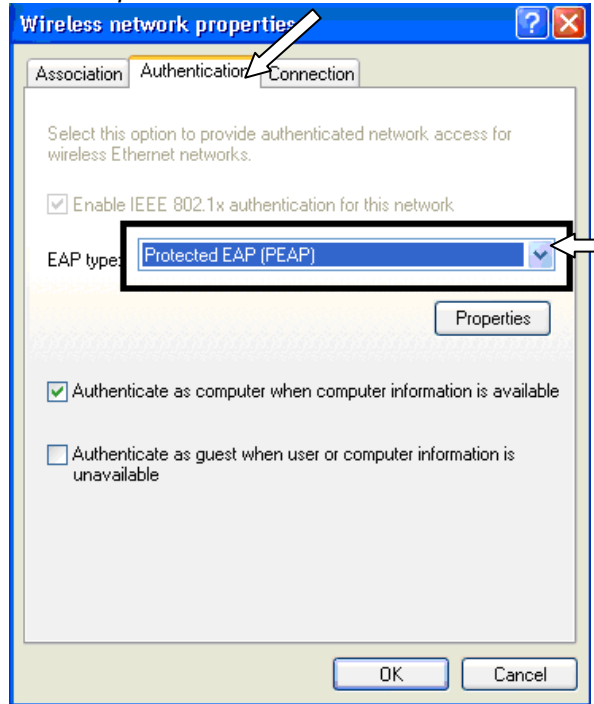


Click **Add**.



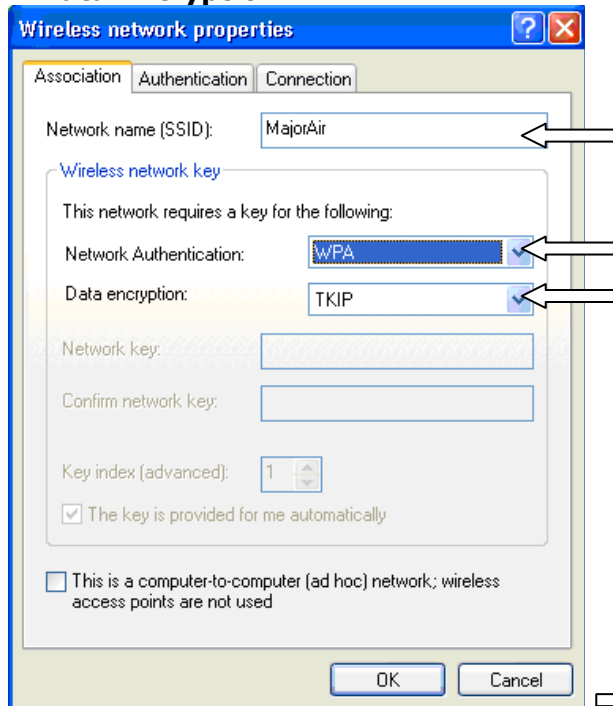
Click the selection box for *EAP type*: to change the EAP type to *Protected EAP (PEAP)*.

Click **Properties**

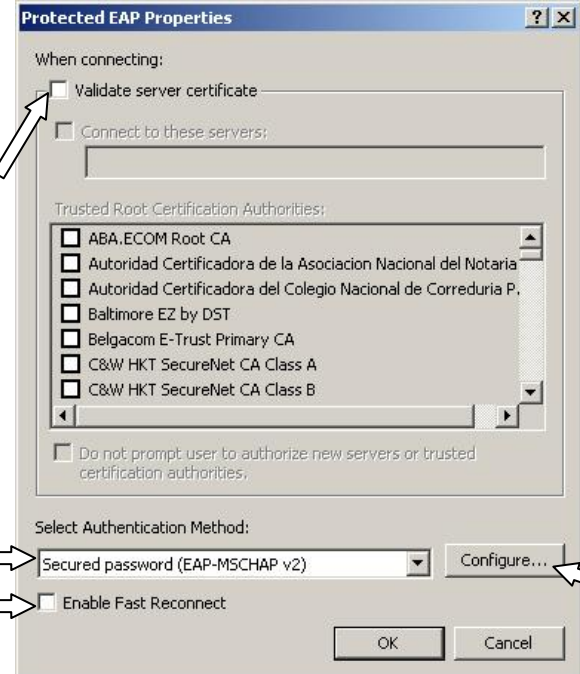


Enter the following information:

**Network name:** MajorAir  
**Network Authentication:** WPA  
**Data Encryption:** TKIP

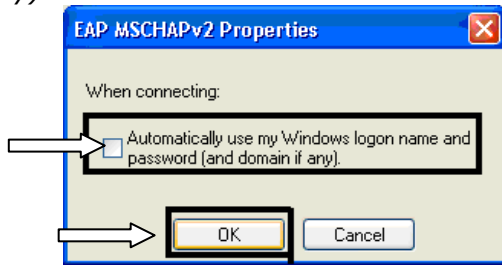


**Deselect** *Validate server certificate*. Click the selection box for *Select Authentication Method* and verify that *Secured Password (EAP-MSCHAP v2)* is chosen. **Check** *Enable Fast Reconnect* | **Click** *Configure...*



Select the *Authentication* tab.

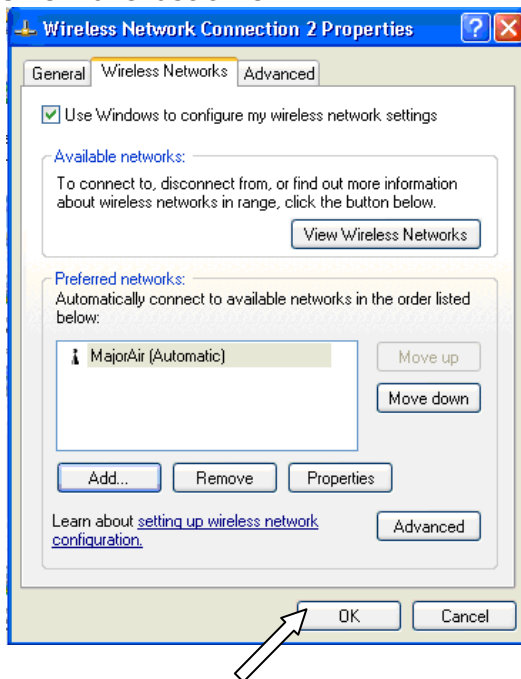
**Deselect** *Automatically use my Windows logon name and password (and domain if any)*. **Click OK**



**Click OK | Click OK.**

Now your window should look like this.

**Click OK** one last time.



**Step 3 – Connecting to MajorAir**

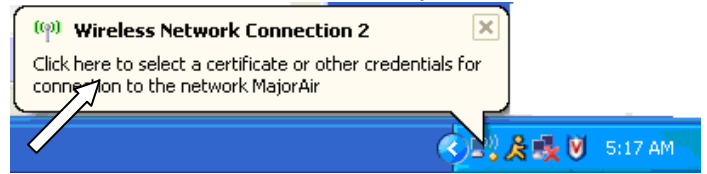
If you are in range of MajorAir, you should see a Wireless Connection Balloon Tip expand from the Wireless Connection icon indicating that you must input your Millsaps credentials.

For assistance, please call, email, or visit:

**HelpDesk at 601-974-1144, HelpDesk@millaps.edu, or Academic Complex 105**  
 Support for Millsaps Faculty, Staff, Graduate Students, Commuter Students, and Guests  
 Open Monday-Friday from 8am-8pm

**ResNet at 601-974-1899, ResNet@millaps.edu, or New South Hall 125**  
 Support for On-Campus Undergraduate Millsaps Students  
 Open Sunday-Thursday from 6pm-10pm and Friday-Saturday from 1pm-5pm

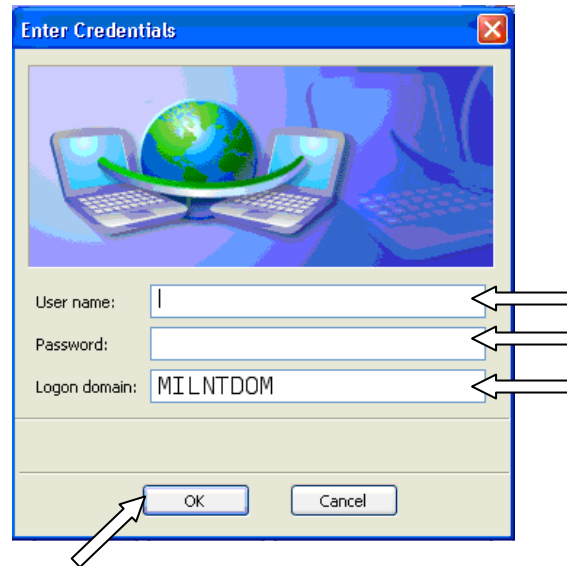
**Click** *Wireless Connection* icon or the *Wireless Connection Balloon Tip*



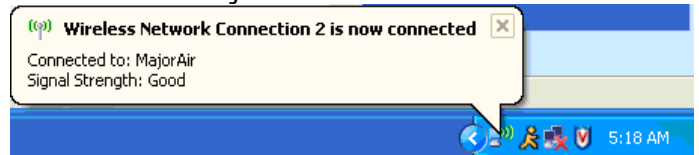
**Enter** the following information:

**User name:** Millsaps user name  
**Password:** Millsaps password  
**Logon domain:** MILNTDOM

**Click OK.**



You should now see a Wireless Connection Balloon Tip expand from the Wireless Connection icon indicating that you are connected to Major Air.



You are now connected to the Millsaps wireless network, MajorAir.